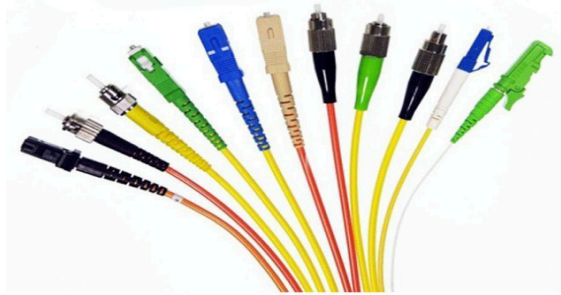


Single-Mode / Multimode OPTICAL FIBER CABLE Pigtail Spec Sheet



SPECIFICATION :

- Optical Fiber Cable Spec : Single Mode, Multi Mode, 2.0mm
- Type of Sleeves in the connectors : UPC / APC / PC Zirconia Ceramic
- Fire Performance : LSZH
- RoSH Compliant

APPLICATIONS :

- Optical System Access Network
- Telecommunications Networks
- Broadcast / CATV Networks
- Data communications networks , including high – bandwidth equipment

TECHNICAL SPECIFICATIONS

	Single-Mode			Multimode
	PC	UPC	APC	PC
Insertion Loss	≤0.3dB	≤0.3dB	≤0.2dB	≤0.2dB
Return Loss	≥45dB	≥50dB	≥60dB	≥35dB
Operating Wavelength	1310nm, 1550nm			850nm, 1300nm
Repeatability	≤0.1dB			
Working Temperature	-40°C~+75°C			
Service Life	>1000 mating cycles			

FIBER PERFORMANCE			
Category	Description	Specifications	
		Before Cabling	After Cabling
	Attenuation @1310 nm	≤0.34 dB/km	≤0.36 dB/km
	Attenuation @1383 nm	≤0.34 dB/km	≤0.36 dB/km
	Attenuation @1550 nm	≤0.20 dB/km	≤0.22 dB/km
	Attenuation @1625 nm	≤0.23 dB/km	≤0.25 dB/km
	Zero Dispersion Wavelength	1300~1324 nm	
	Zero Dispersion Slope	≤0.092 ps/nm ² -km	
	Polarization Mode Dispersion (PMD)	0.2 ps/√km	
	Cable Cutoff Wavelength (λ _{cc})	≤1260 nm	
Optical Specifications	Macro bending Loss		
	(100 turns; Φ50 mm) @1550 nm (100 turns; Φ50 mm) @1625 nm	≤0.05 dB	≤0.10 dB
	Mode Field	9.2±0.4μm	
	Cladding Diameter	125±1μm	
Dimensional Specifications	Core/clad concentricity error	≤0.6 μm	
	Cladding Non-Circularity	≤1.0 %	
Mechanical Specifications	Proof stress	≥0.69Gpa	

Sample Drawing :

SC/PC SMS2.0

